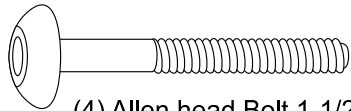
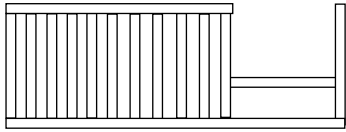


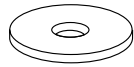
# GUARD RAIL INSTALLATION

## THIS STEP REQUIRES:

### Guard Rail



(4) Allen head Bolt 1-1/2"

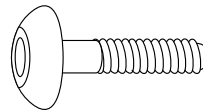


(6) Washers

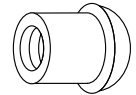


(6) Lock Washers

## (Included in crib hardware)



(2) Allen head Bolt 3/4"



(2) End Cap



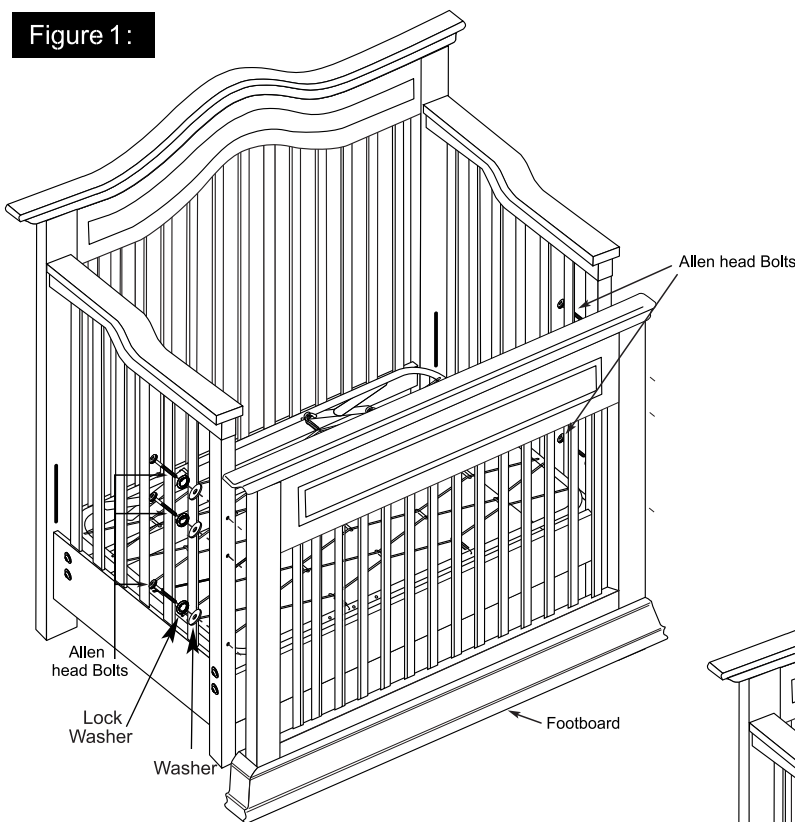
(1) Allen Wrench



## WARNING

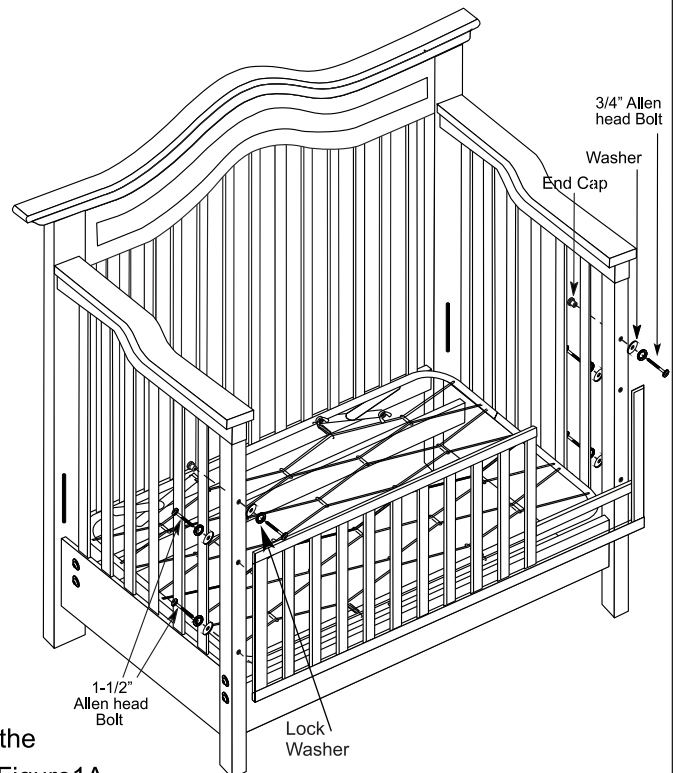
WHEN CONVERTING THIS CRIB TO A TODDLER BED, A GUARD RAIL MANUFACTURED BY LAJOBI INC., MUST BE USED.

Figure 1:



**NOTE:** Assembly is easier if the two (2) bottom Allen head bolts are pre-threaded first before threading the four (2) top Allen head bolts.

Model shown is example only.  
Styles may vary



**A.** Remove the footboard by unscrewing the six Allen head Bolts as shown in Figure 1.

**B.** Attach the guard rail using the 4 Allen head bolts that were used to attach the footboard. Insert the 1-1/2" Allen head bolts through a lock Washer and Washer first through the inside edge of the crib side, then through the threaded inserts in the guard rail (fig.1A). Tighten with the Allen wrench.

**C.** Insert the 3/4" Allen bolts into the remaining top holes in the crib side legs by first inserting the 3/4" Allen head both through the lock washer and washer then through the crib side as show in Figure1A. Secure with end cap. Tighten with Allen wrench.

# Furniture Care Instructions

## Room Climate Control

Wood, when first cut contains more than 50 percent water. When it is prepared for furniture construction it is placed in a Kiln and the moisture content is brought down to 8 to 10 percent. Wood is porous and responds to its environment. If the room has high humidity it will absorb it and expand and if the humidity is low it will lose moisture and shrink.

It is important that the humidity levels in the room be controlled from extremes of too much humidity or too little. Furniture should not be placed close to air-conditioning outlets, fire places, radiators, space heaters, humidifiers or dehumidifiers. Exposure to extreme variations of temperature and humidity can damage any fine wood product.

## The Ideal Environment for Fine Furniture

Fine wood furniture will have fewer problems when its environment is controlled at a temperature between 65 and 75 degrees and a relative humidity between 35 and 40 percent. Wood placed in an environment outside of those limits can and will shrink or expand and may develop some small cracks which are not material or structural defects.

## Sticking Doors and Drawers

With the minor changes in temperature and humidity doors and drawers may swell and be difficult to open or close. Tolerances have been built into the units but extreme conditions may still cause sticking. This will adjust back to normal over time but until it does consider using a dehumidifier or rub candle wax or paraffin on the sides that stick.

## Avoid Direct Sunlight

Keep the furniture out of direct sunlight. Ultraviolet rays will fade colors and in some cases darken them. It can also cause crazing or hair line cracks in the finish. White finishes will yellow naturally over time and exposure to direct sunlight will hasten this natural process along with some woods darkening naturally over time; this is not considered to be a quality defect.

## Proper Storage

If you need to put your furniture in storage for any period of time do not store them in a damp basement or hot dry attic. Allow air movement around the furniture and do not stack anything on it.

## In General

- Protect furniture surface from hot or extremely cold items.
- Use coasters under hot or cold beverages
- Do not use synthetic fabric under accessories or lamps
- Protect tops from pens, markers and crayons
- Oils from potpourri and other scented items can damage the furniture finish.
- Do not drag items across the surface of the furniture.
- Allow the surface to breath by rotating your accessories and lamps.
- Do not over polish the furniture, do it only two or three times a year. Over polishing can distort the natural finish of the product.
- Do not wax the furniture as wax build up can destroy the natural finish of the product.
- When moving furniture always lift the unit. Do not push or drag it to avoid damage to legs
- Keep the furniture level so doors and drawers open and close freely.
- Clean with a damp, not wet, cloth. Use only a mild soap. Do not use abrasive cleaners.

# **STOP**

**IF YOU EXPERIENCE ANY  
ISSUES WITH THIS PRODUCT**

**BEFORE YOU  
RETURN THIS TO  
THE RETAILER**

**PLEASE FOLLOW  
PROCEDURES ON THE  
REVERSE SIDE OF THIS FORM.**

## Product Assistance Procedures

You have purchased a quality piece of furniture. Our international team has spent many hours designing and engineering this piece and packaging to ensure you will be satisfied with your purchase. But if for any reason you need help with your purchase please contact us at any time.

### Procedures to follow should you have any questions:

For best and most timely service please contact us by e-mail at [info@lajobi.com](mailto:info@lajobi.com)

Please provide the following information in your e-mail.

1. Your Name \_\_\_\_\_
2. Address \_\_\_\_\_  
\_\_\_\_\_
3. Phone number \_\_\_\_\_
4. Place and date of purchase \_\_\_\_\_  
\_\_\_\_\_
5. Item number and description of your product. \_\_\_\_\_  
\_\_\_\_\_

The item number can be found on the back of the case or on the foot/headboard of the crib. Please include all numbers found on that label including the PO# and production date.

6. Short description of the issues and attach a photo if possible.  
\_\_\_\_\_  
\_\_\_\_\_  
\_\_\_\_\_

Someone will contact you via e-mail or phone to help you with your issues.

If you do not have internet access, please fax the above information to 609-409-5809

If you do not have internet or fax access, please call us at 888-266-2848 and be sure to have all the above information ready to give to your Client Service Specialist.